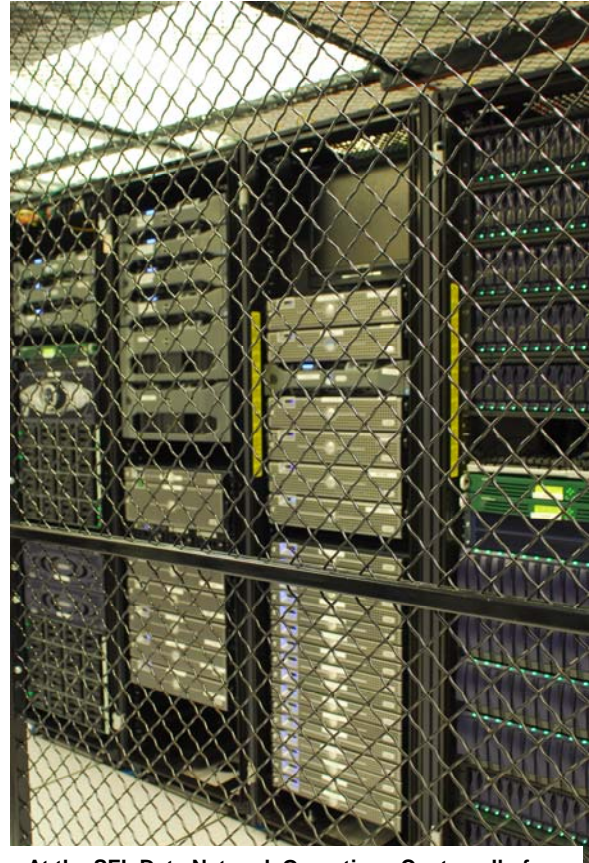




## NETWORK OPERATIONS CENTER

The SFL Data network operations center is located in a Hosting.com collocation facility in San Francisco, California. Hosting.com is a national provider of SAS 70 Type II certified data centers. SAS 70 Type II audits ensure Hosting.com keeps their policies and procedures up-to-date as technology and business needs change. These audits are performed by independent auditors who ensure Hosting.com has created and implemented the proper controls for data center management.

SFL Data's network operations center is located in a seismically hardened building constructed on bedrock. The facility also contains redundancy in its electrical, fire suppression and environmental control systems. This includes multiple FM200 dry fire suppression systems, Liebert ventilation and cooling units, and a redundant universal power supply system for conditioned and consistent power. There is also a diesel generator back-up system in the event municipal power becomes unavailable.



**At the SFL Data Network Operations Center, all of our systems are rack mounted in a secure enclosure accessible only by authorized SFL Data personnel.**



Our computer systems are located in a cage enclosure secured for access only by authorized SFL Data personnel. Building security is monitored and enforced by onsite Hosting.com personnel through the use of security cameras located throughout facility and surrounding exterior areas. The building entrance and data center corridor are protected by a keycard, in addition to a biometric hand scanner with a personal pin number. Access to the data center is limited to less than five SFL Data team members.

**This biometric hand scanner and PIN pad must be used to enter the data center.**



The SFL Data computer network is built on the latest server technology with a combination of enterprise class SAN and NAS storage solutions. Our focus is on security, system performance, capacity and redundancy.

The SFL Data computer network operates in a high-availability configuration with redundant fire walls, switches and storage arrays. All servers are physically hardened and employ redundant power supplies and network interfaces. Our SQL databases are set up in a failover cluster configuration ensuring continuous operation in the event of hardware failure.

Currently we have more than 100 Terabytes of storage capacity, with the ability to expand to more than 10 times beyond the current capacity. Incremental snapshots of the data we host on behalf of our clients are taken at regular intervals, ensuring that the chance of data loss in the event of a system failure is virtually zero. Plans are also underway to continuously back up our data over a secured channel to a secure remote site out of state.

Our systems regularly undergo penetration testing and vulnerability assessments conducted by an independent security firm. Our system security measures are also U.S. Department of Commerce and EU Safe Harbor Certified. SFL Data's production facility runs 24/7 and has the capacity to process more than 12 GB of native files per hour – about 250 GB per day. With the ability to create more than one million TIFF images per day, SFL Data has the capacity to meet the current and future needs of our clients.



100 California Street, Suite P-10, San Francisco, CA 94111

ph 415.392.2900 • fax 415.392.2902 • [www.sfldata.com](http://www.sfldata.com)